



**ISSUE:**

Issued for Permit  
08.05.2016

PROJECT: 16-018

## Hampton Inn &amp; Suites

New Stanton, PA 15672

OWNER:

Stanton Hospitality LLC

52 Blueberry Lane,  
Grove City, PA 16127

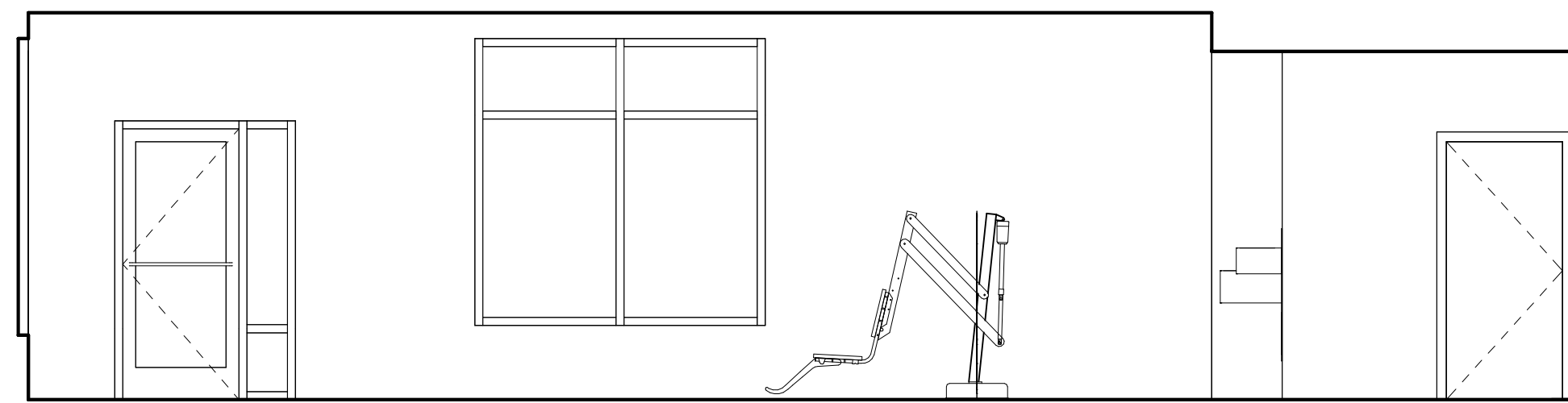
THESE DRAWINGS ARE FOR REVIEW OF DESIGN AND SCOPE DESCRIPTION ONLY. NO REPRESENTATION IS MADE TO THE ACCURACY OF THE DRAWINGS WITH RESPECT TO EXISTING DIMENSIONS OR CONDITIONS. ALL CONSULTANTS AND CONTRACTORS MUST VERIFY ANY AND ALL DIMENSIONS AND CONDITIONS WHICH ARE CRITICAL TO THEIR WORK. THESE DRAWINGS ARE INSTRUMENTS OF SERVICE AND ARE THE INTELLECTUAL PROPERTY OF JMAC ARCHITECTS. ANY UNAUTHORIZED USE OR REPRODUCTION IS PROHIBITED.

[illegible]

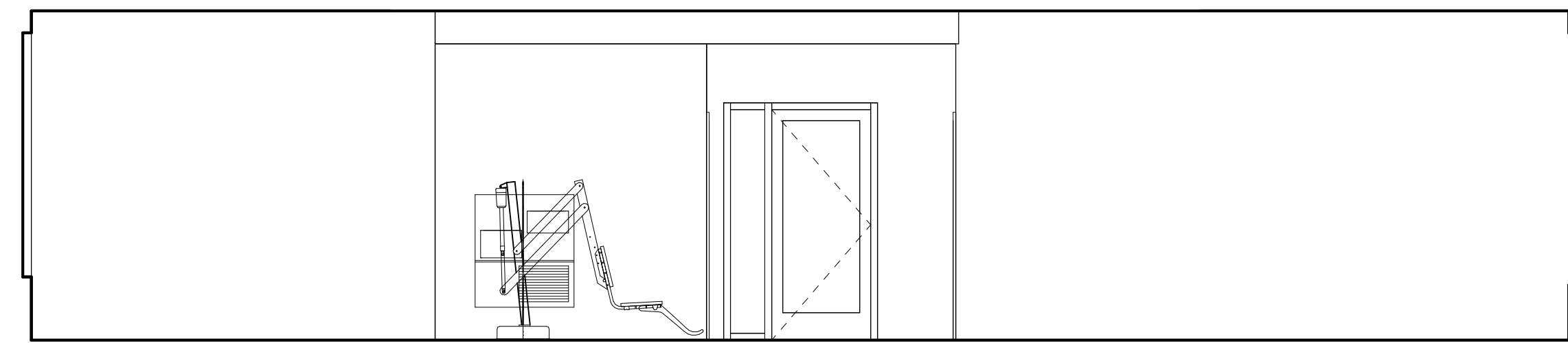
## Pool & Fitness Room Elevations

1/4" = 1'-0"

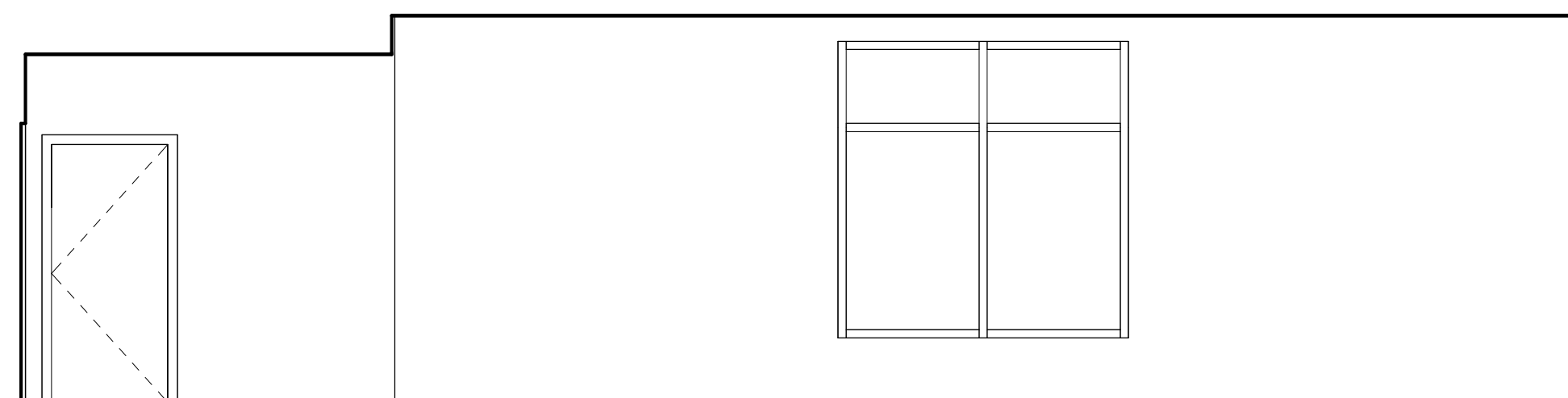
A-507



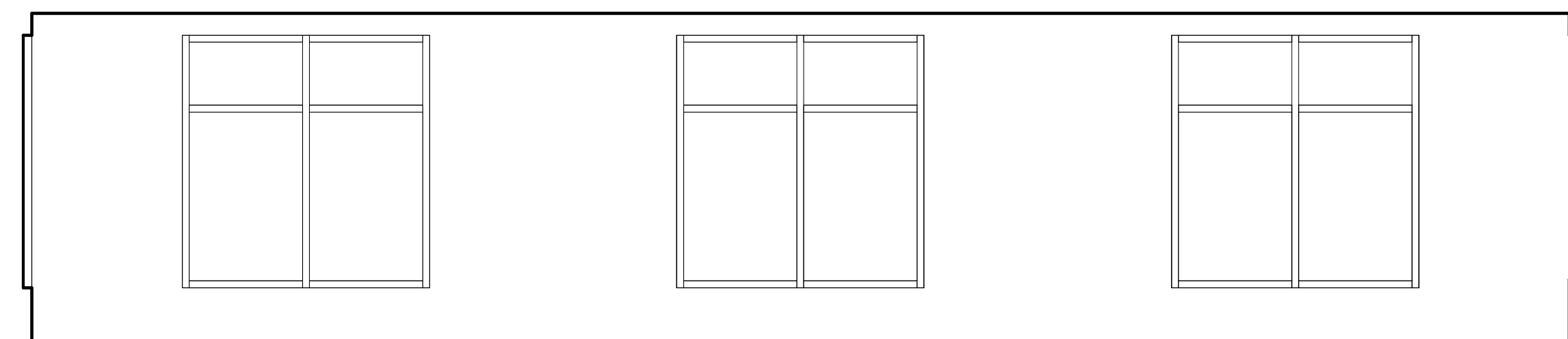
1 Pool Elevation  
1/4" = 1'-0"



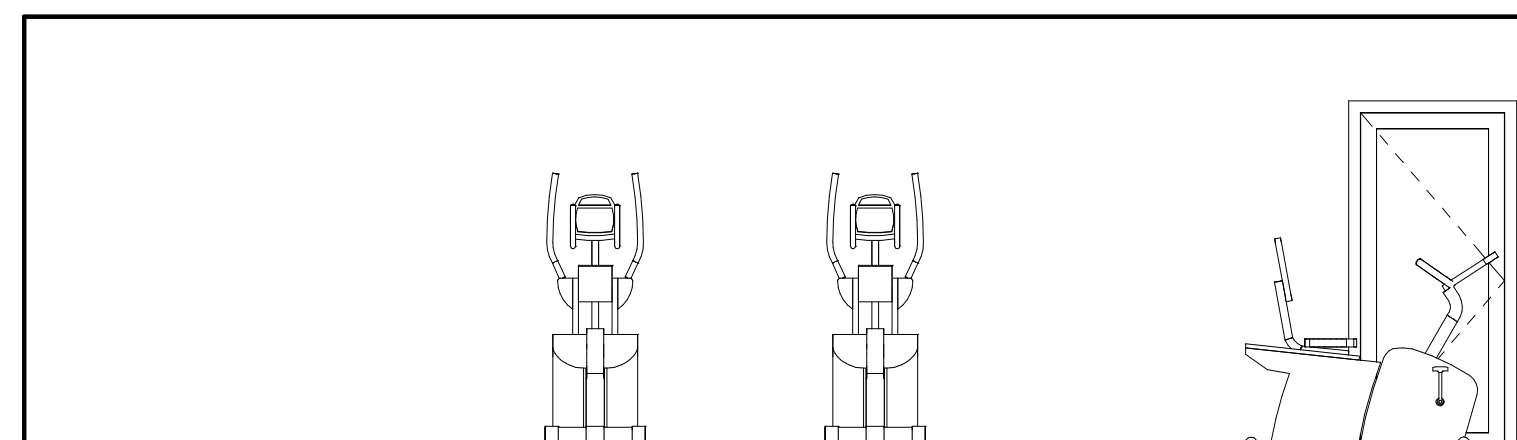
2 Pool Elevation  
1/4" = 1'-0"



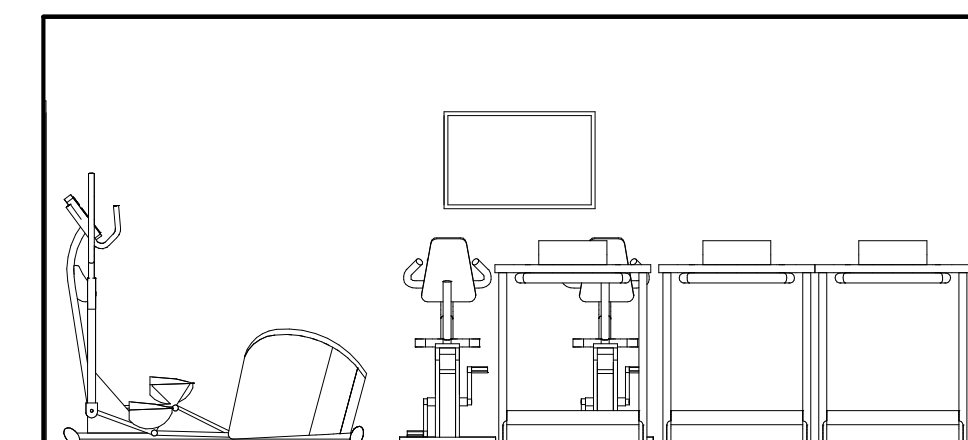
3 Pool Elevation  
1/4" = 1'-0"



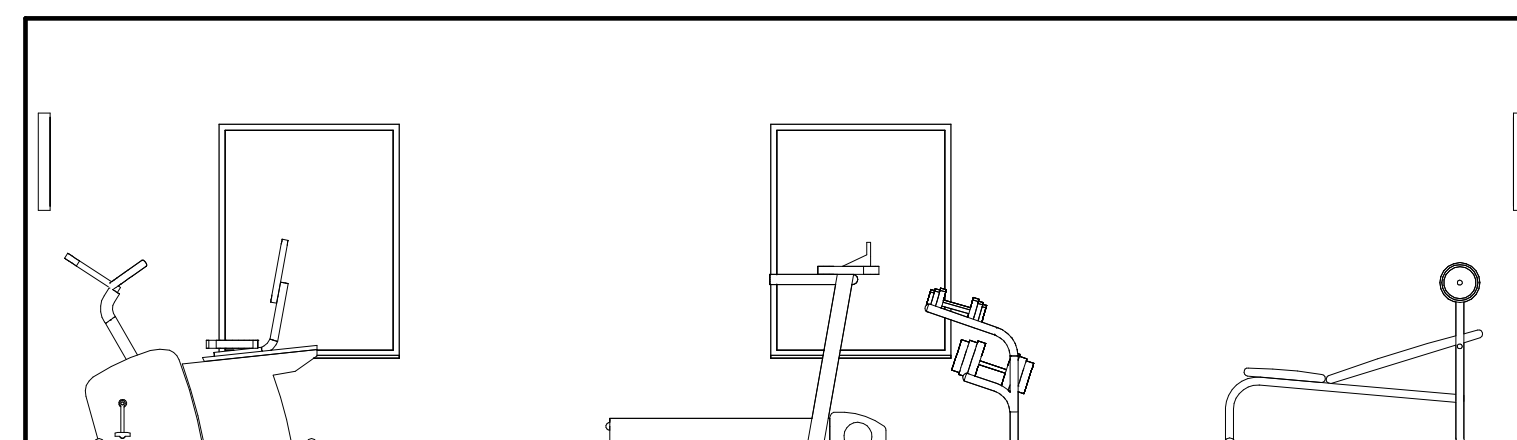
4 Pool Elevation  
1/4" = 1'-0"



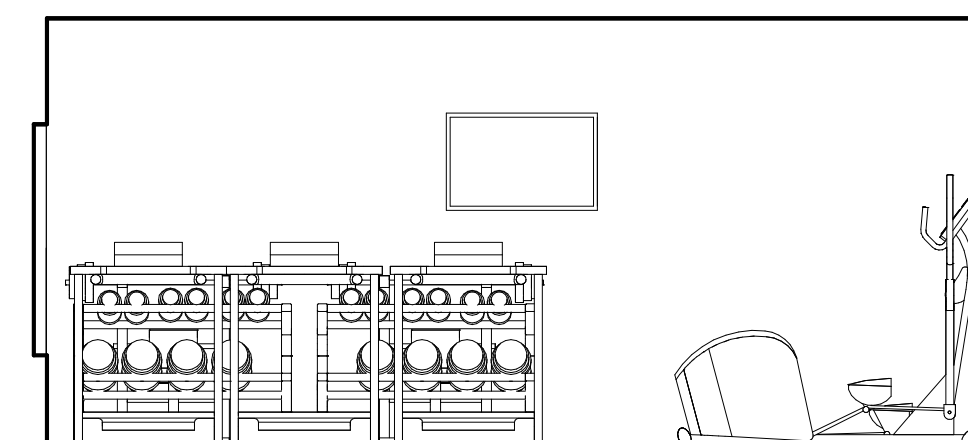
5 Fitness Room Elevation  
1/4" = 1'-0"



6 Fitness Room Elevation  
1/4" = 1'-0"



7 Fitness Room Elevation  
1/4" = 1'-0"



8 Fitness Room Elevation  
1/4" = 1'-0"